

The background is an abstract composition of textured, layered colors. The top left is a large area of olive green. To its right is a smaller, irregular shape of bright blue. The rest of the image is dominated by various shades of red and orange, with a prominent horizontal band of bright orange-red in the middle. The textures are rough and fibrous, suggesting a material like paper or fabric.

SUMMER
JEWELS

D·C

D'LAN Contemporary presents *Summer Jewels*, an exhibition celebrating the creative practices of leading First Nations Australian artists and their lasting influence on how Country is felt, seen, and imagined through colour, rhythm, and composition.

Each work has been selected for its jewel-like quality – offering an exciting discovery of unique beauty. Representing artists from across Australia's most celebrated artistic regions, the vastness and diversity of their ancestral Countries have been masterfully captured and distilled on substrates of a smaller scale. Each approach reveals an intense and deliberate perspective: every brushstroke is purposeful, every mark holds meaning.

Many of these featured artists repeatedly return to a specific cultural site or story in their work, often on a monumental scale. They revisit their homelands, traversing through historical and ancestral times, and depict these stories with lyrical colour and form. Throughout this collection, the artists distil their deep cultural understanding and the extensiveness of their Country into small masterpieces.

Summer Jewels features work by key artists from the Western Desert including George Tjungurrayi, Naata Nungurrayi and Johnny Yungut, alongside dynamic works from Valmay Nampitjinpa, Lydia Bal Bal Alma Webou and more.





ALMA WEBOU

c. 1928 – 2009

Yulparija language

Pinkalarta 2007

synthetic polymer paint on linen

112 × 61 cm

PROVENANCE

The Artist, painted at Broome, Western Australia

Short St Gallery, Western Australia, cat. no. 783853

Private Collection, Brisbane, Queensland

acquired from the above

AUD 18,000



LYDIA BALBAL

born c. 1958

Yulparija Language

Pinkarong 2009

synthetic polymer paint on linen

106.5 × 106.5 cm

PROVENANCE

The Artist, painted at

Short St Gallery, Broome, Western

Australia, cat. no. 25084

Raft Artspace, Alice Springs, Northern Territory

Private Collection, Melbourne, Northern

Territory, acquired from the above

AUD 7,000



TOMMY MITCHELL

1943 – 2013

Ngaanyatjarra language

Walu 2009

synthetic polymer paint on canvas

76.2 × 76.2 cm

PROVENANCE

The Artist, painted at Warakurna, Western Australia

Warakurna Artists, Warakurna, Northern

Territory, cat. no. 236-09

The Le Pley Collection, Western Australia,
acquired from the above in 2009

AUD 14,000



GEORGE TJUNGURRAYI

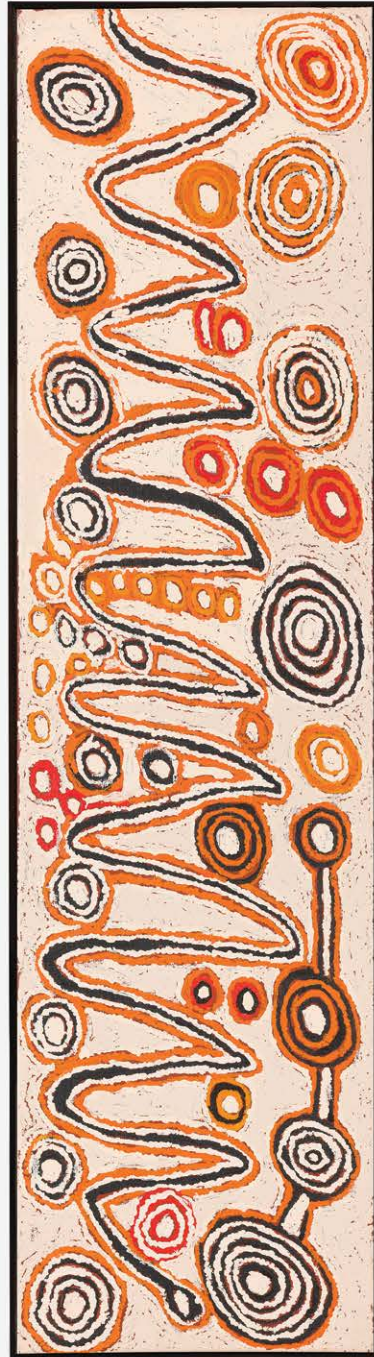
born 1943
Pintupi language

Untitled – Tjulurunga 2012
synthetic polymer paint on linen
107 × 28 cm

PROVENANCE

The Artist, painted at Kintore, Northern Territory
Papunya Tula Artists, Alice Springs,
Northern Territory, cat. no. GT1211056
ReDot Gallery, Singapore
Private Collection, Melbourne, Victoria,
acquired from the above

AUD 14,000



KAWAYI NAMPITJINPA

c. 1948 – 2014

Warlpiri & Pintupi language

Untitled – Pinpinmga 2011

synthetic polymer paint on linen

107 × 28 cm

PROVENANCE

The Artist, painted at Kintore, Northern Territory

Papunya Tula Artists, Alice Springs,

Northern Territory, cat. no. KN1109076

Harvey Art Projects, Idaho, United States

Private Collection, Melbourne, Victoria,

acquired from the above

AUD 7,700



VALMAY NAMPITJIMPA

born c. 1936

Luritja language

Karrkurinkinja 2013

synthetic polymer paint on linen

101.5 × 76 cm

PROVENANCE

The Artist, painted at Tjukurla, Western Australia

Tjarlili Arts, Northern Territory, Tjukurla,

Western Australia, cat. no. 13-562

Marshall Arts, Adelaide, South Australia

Private Collection, Melbourne, Victoria,

acquire from the above

AUD 4,400



WINTJIYA NAPALTJARRI

c. 1932 – 2014

Pintupi language

Untitled – Watanuma 2009

synthetic polymer paint on linen

87 × 28 cm

PROVENANCE

The Artist, painted at Kintore, Northern Territory

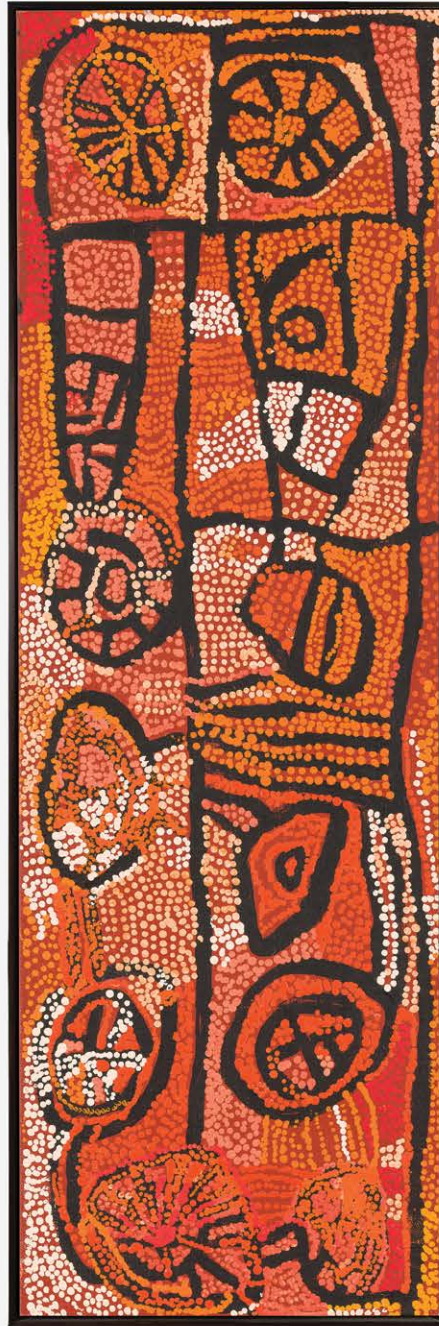
Papunya Tula Artists, Alice

Springs, Northern Territory

Private Collection, Melbourne, Victoria,

acquired from the above

AUD 5,500



NAATA NUNGURRAYI

c. 1932 – 2021

Pintupi language

Untitled – Marrapinti 2007

synthetic polymer paint on linen

87 × 28 cm

PROVENANCE

The Artist, painted at Kintore, Northern Territory

Papunya Tula Artists, Alice Springs,

cat. no. NN0705194

Private Collection, Sydney, New South
Wales, acquired from the above

AUD 12,000



LAWRENCE PENNINGTON

born c. 1934

Pitjantjatjara language

Mituna Wipiya 2016

synthetic polymer paint on linen

75 × 60 cm

PROVENANCE

The Artist, painted at Tjuntjuntjara, Western Australia

Spinifex Arts Project, Tjuntjuntjara,

Western Australia, cat. no. 15-74

ReDot Gallery, Singapore

Private Collection, Melbourne, Victoria,

acquired from the above in 2016

AUD 6,500



LAWRENCE PENNINGTON

born c. 1934

Pitjantjatjara language

Kulitjara 2013

synthetic polymer paint on linen

75 × 60 cm

PROVENANCE

The Artist, painted at Tjuntjuntjara, Western Australia

Spinifex Arts Project, Tjuntjuntjara,

Western Australia, cat. no. 13266

ReDot Gallery, Singapore

Private Collection, Melbourne, Victoria,

acquired from the above

AUD 6,500



JACKIE KURLTJUNYINTJA GILES

c. 1944 – 2010

Manyjilyjarra language

Tjamu Tjamu 2007

synthetic polymer paint on linen

76 × 102 cm

PROVENANCE

The Artist, painted at Patjarr, Western Australia

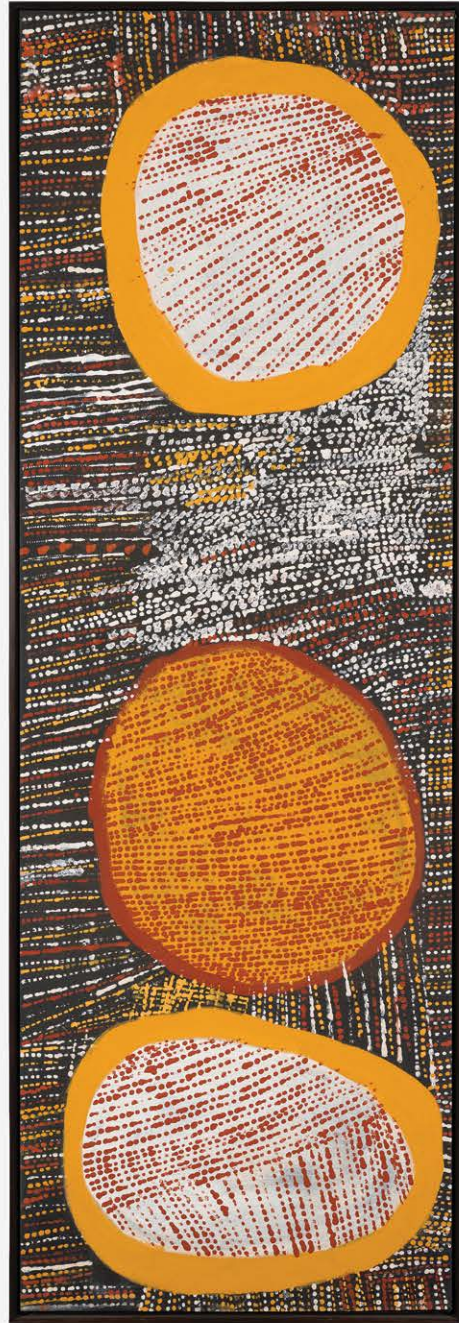
Kayili Arts, Western Australia, cat. no. 07-191

Marshall Arts, Adelaide, South Australia

Private Collection, Melbourne, Victoria,

acquired from the above

AUD 9,600



CONRAD TIPUNGWUTI

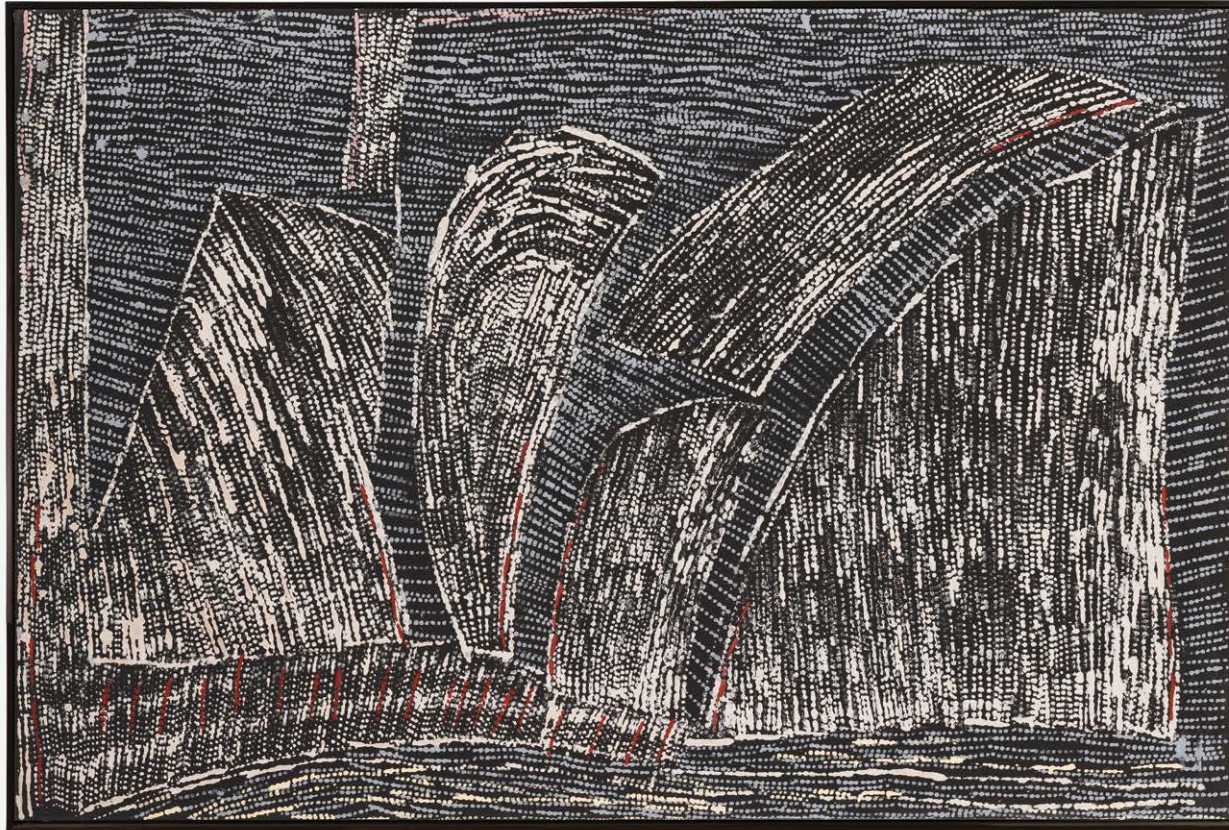
born 1966
Tiwi language

Kulama 2012
synthetic polymer paint on linen
180 x 60 cm

PROVENANCE

The Artist, painted on Melville
Island, Northern Territory
Jilamara Arts and Crafts, Melville Island,
Northern Territory, cat. no. 480-11
Outstation Gallery, Darwin, Northern Territory
Private Collection, Melbourne, Victoria,
acquired from the above in 2012

AUD 11,000



CORNELIA TIPUAMANTUMIRRI

c. 1930 – 2023

Tiwi language

Winga – Tidal Movement / Waves 2011

synthetic polymer paint on linen

80 × 120 cm

PROVENANCE

The Artist, painted at Pirlangimipi,

Melville Island, Northern Territory

Munupi Arts, Melville Island, Northern

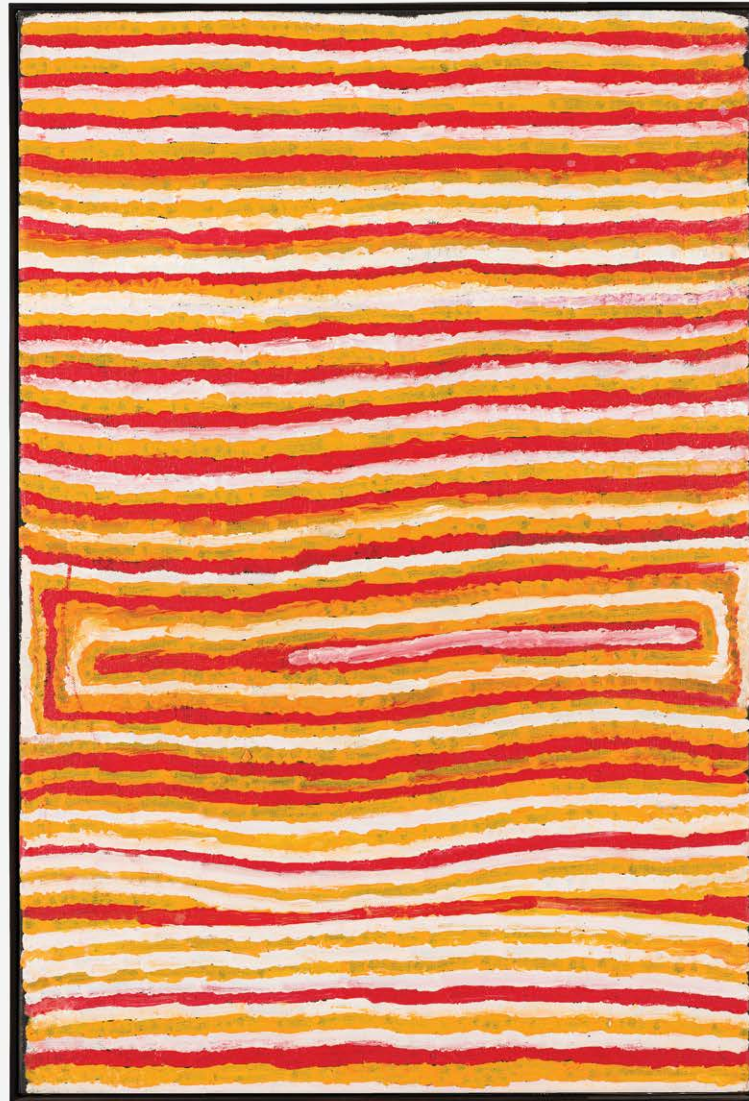
Territory, cat. no. MU11cor856

Marshall Arts, Adelaide, South Australia

Private Collection, Melbourne, Victoria,

acquired from the above in 2013

AUD 5,500



TJUMPO TJAPANANGKA

c. 1926 – 2007

Kukatja language

Wati Kutjara 2006

synthetic polymer paint on linen

90 × 60 cm

PROVENANCE

The Artist, painted at Balgo, Western Australia

Warlayirti Artists, Balgo, Western

Australia, cat. no. 61/06

Private Collection, Melbourne, Victoria,

acquired from the above in 2012

AUD 12,000



WILLY TJUNGURRAYI

1936 – 2018

Pintupi language

Untitled – Kaakuratintja 2015

synthetic polymer paint on linen

107 × 91 cm

PROVENANCE

The Artist, painted at Kintore, Northern Territory

Papunya Tula Artists, Alice Springs,

Northern Territory, cat. no. WT1508033

Private Collection, Melbourne, Victoria,

acquired from the above in 2015

AUD 18,000



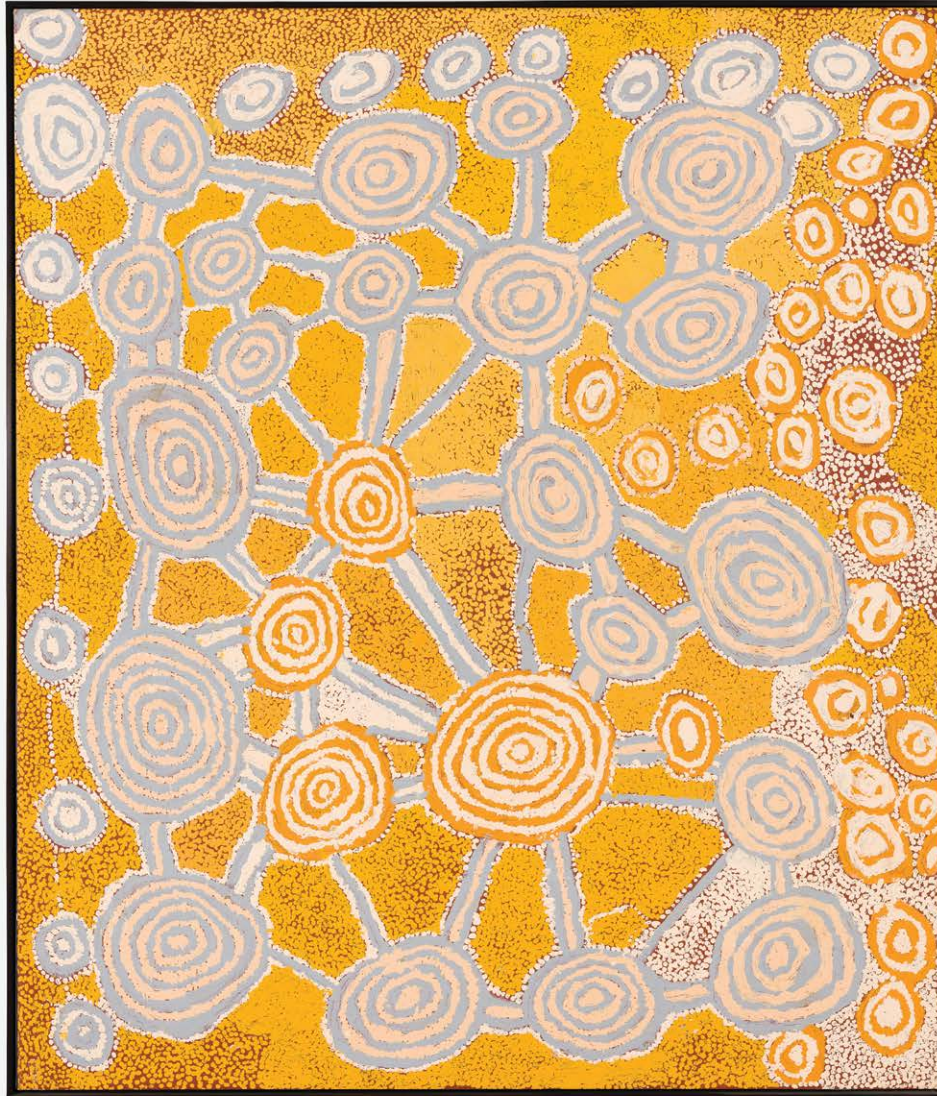
NORA WOMPI

Nyarruri 2010
synthetic polymer paint on linen
91 × 91 cm

PROVENANCE

The Artist, painted at Newman, Western Australia
Martumili Artists, Western Australia, cat. no. 10-1122
Outstation Gallery, Darwin, Northern Territory
Private Collection, Melbourne, Victoria,
acquired from the above in 2011

AUD 5,500



JOHNNY YUNGUT TJUPURRULA

Untitled – Tingari 2010
synthetic polymer paint on linen
107 × 91 cm

PROVENANCE

The Artist, painted at Kintore, Northern Territory
Papunya Tula Artists, Alice Springs,
Northern Territory, cat. no. JY1002027
Private Collection, Melbourne, Victoria,
acquired from the above in 2010

AUD 15,000



WAKARTU CORY SURPRISE

Karru 2006
synthetic polymer paint on canvas
90 × 120 cm

PROVENANCE

The Artist, painted at Fitzroy Crossing,
Western Australia Mangkaja Arts Resource Centre,
Fitzroy Crossing, Western Australia,
cat. no. 416/06 Raft Artspace, Alice Springs,
Northern Territory Private Collection, Melbourne,
Victoria, acquired from the above in 2006

AUD 14,000

COPYRIGHT

- © Conrad Kamilowra Tipungwuti/Copyright Agency 2025
- © Jackie Kurtjunyintja Giles/Copyright Agency 2025
- © Lydia Balbal/Copyright Agency 2025
- © Cornelia Tipuamantumirri /Copyright Agency 2025
- © George Tjungurrayi /Copyright Agency 2025
- © Johnny Yungut Tjupurrula/Copyright Agency 2025
- © Kawayi Nampitjinpa /Copyright Agency 2025
- © Lawrence Pennington/Copyright Agency 2025
- © Nora Wompi/Copyright Agency 2025
- © Tjumpo Tjapanangka/Copyright Agency 2025
- © Valmayi Nampitjinpa/Copyright Agency 2025
- © Willy Tjungurrayi/Copyright Agency 2025
- © Tommy Mitchell/Copyright Agency 2025
- © Lawrence Pennington /Copyright Agency 2025
- © Alma Webou/Copyright Agency 2025
- © Wakartu Cory Surprise/Copyright Agency 2025
- © Naata Nungurrayi/Copyright Agency 2025
- © Wintjiya Napaltjarri /Copyright Agency 2025

PHOTOGRAPHY

Leslie Haworth
Stephen Oxenbury



SYDNEY / GADIGAL COUNTRY
97–99 Queen Street, Woollahra
Sydney NSW 2025 Australia

DLANCONTEMPORARY.COM.AU